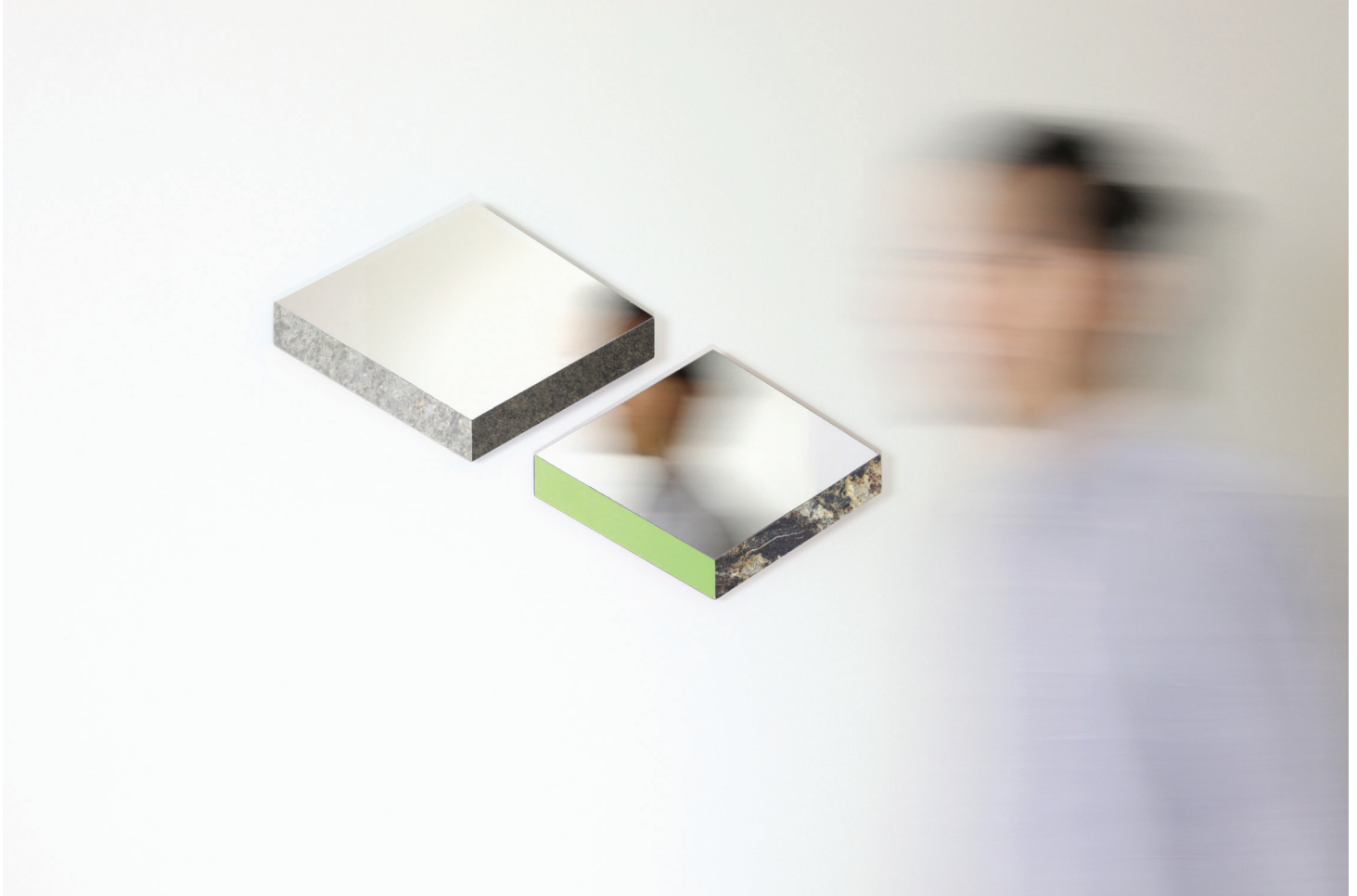


Accessory

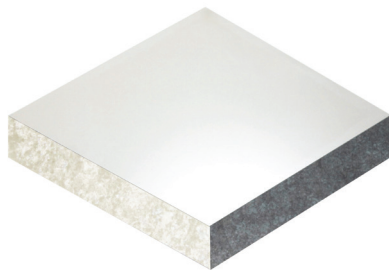
IsoGrid

Designed and handmade by Jojo Chuang in Texas for Hyfen



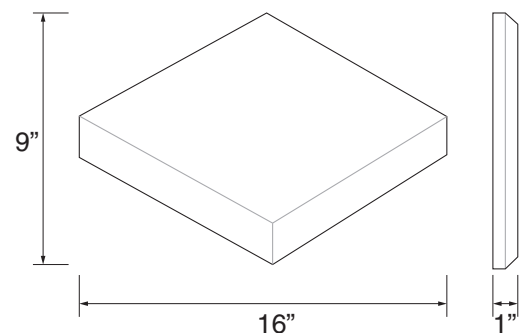
IsoGrid Mirror is an extension from Jojo Chuang's distinctive Isometric series. A visual language, which allows the designer to develop three-dimensional objects with false perspective that can only exist in two-dimensional surface, bases on isometric grid is created.

The diamond/cube-shaped mirror is the basic unit of the isometric grid. Additionally, the reflective surface in the grid system extends horizontal depths, breaks two-dimensional views into three-dimensional space with this unique experience.



Materials: polished stainless steel, plywood, vinyl veneer

Weight: 2.2lbs / 1kg



- Granite
- Light Green
- Wine