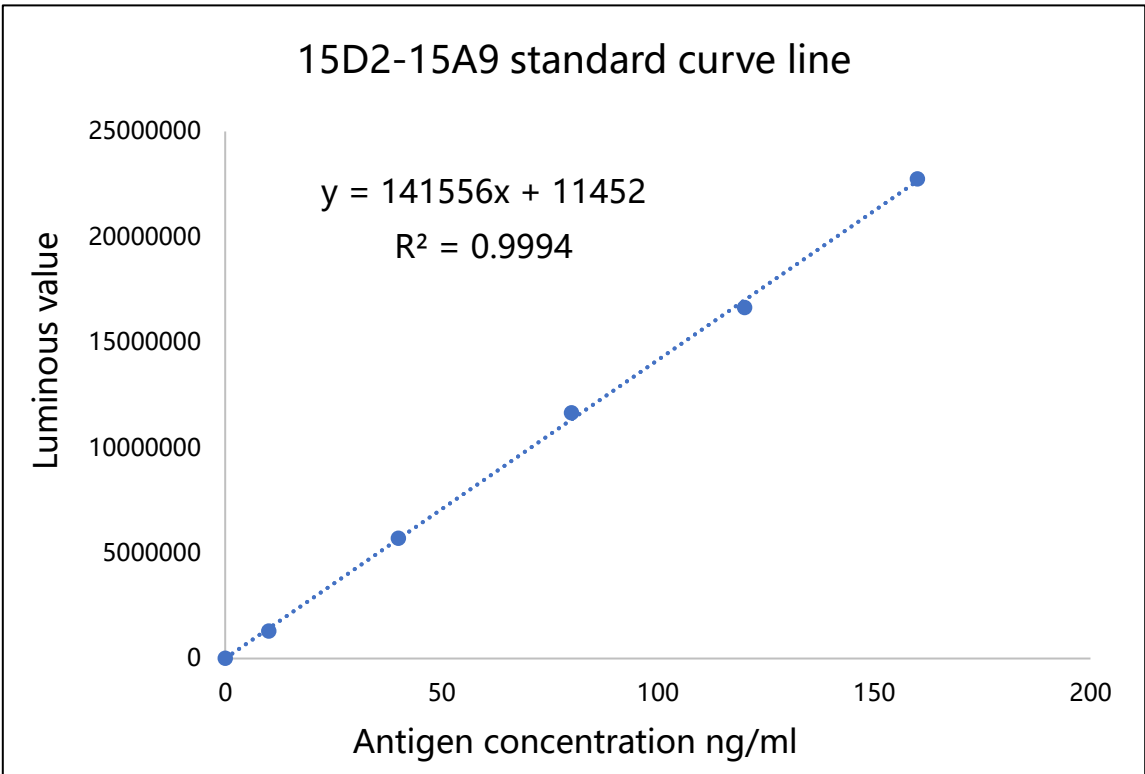
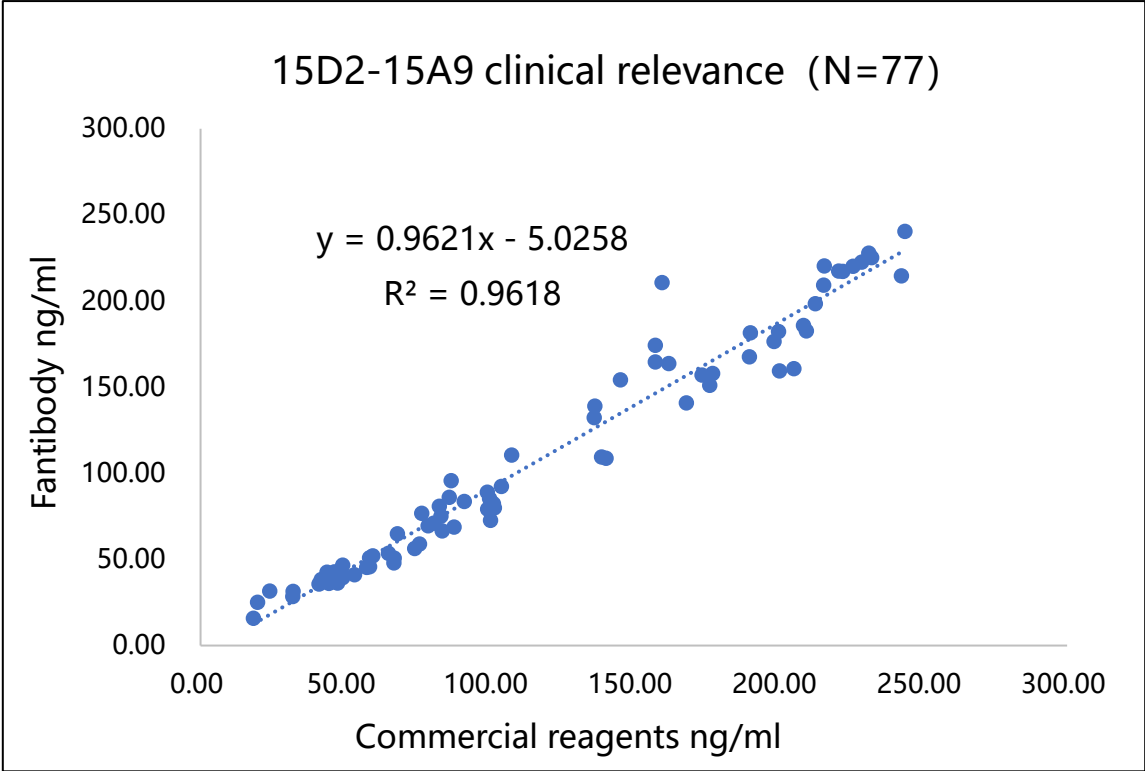


Products

Product	CAT#	Purity	Source	Application
CHI3L1 Ag	FAP-KC007	>90%	HEK 293F cells	Calibrator or Quality Control

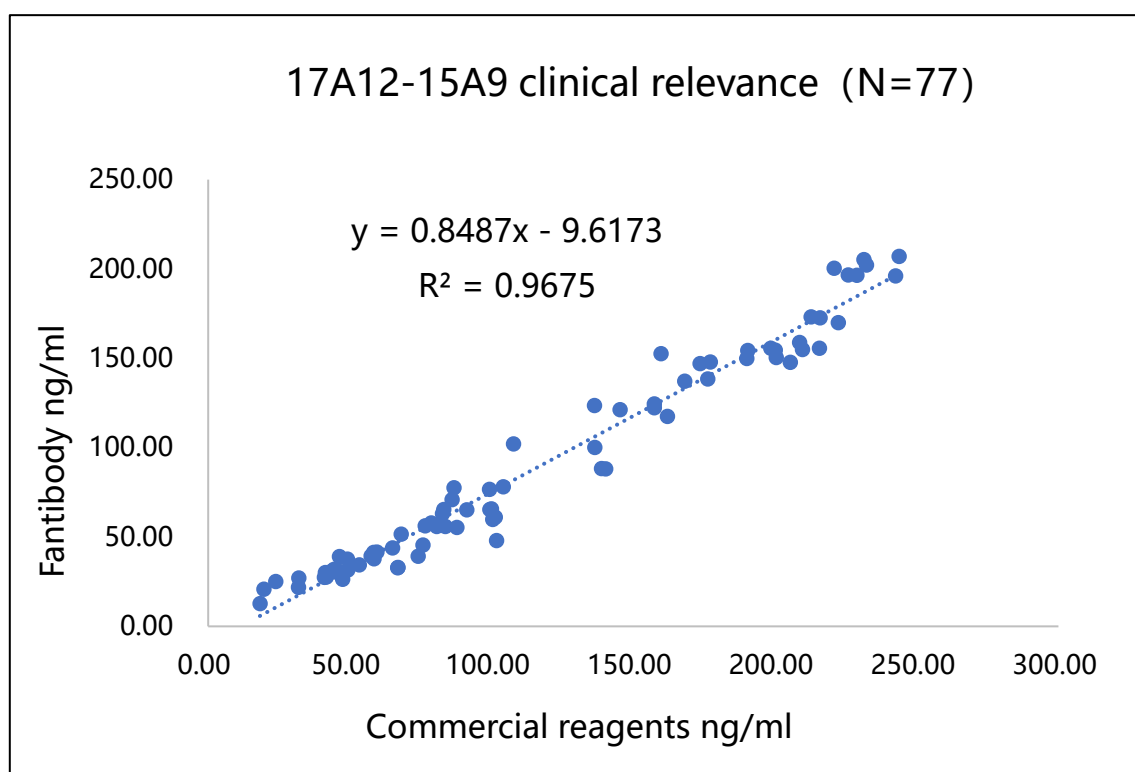
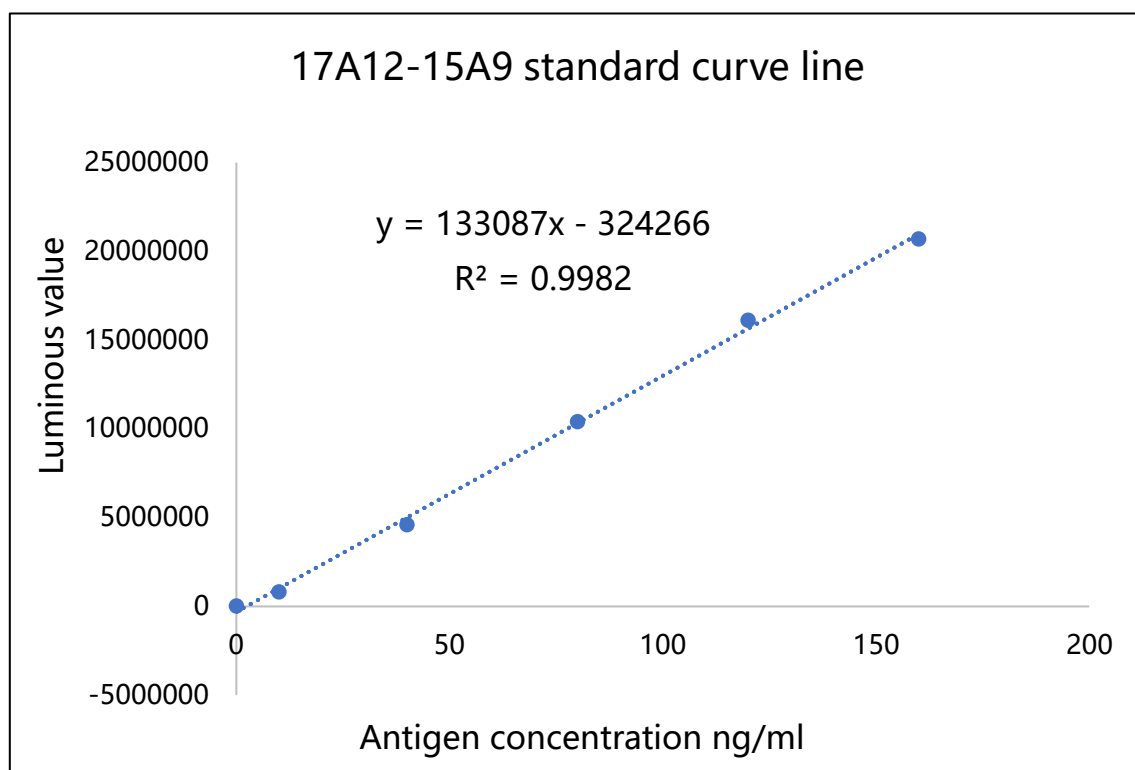
Product	CAT#	Clone	Source	Capture/ Detection	Pair/ Application
CHI3L1 Ab	FAB-K007-15A9	15A9	Mouse	Detection	CLIA 15D2-15A9 17A12-15A9 TIA 6C4-6G4 6C4-15G4 6G4-15G4
	FAB-K007-15D2	15D2	Mouse	Capture	
	FAB-K007-17A12	17A12	Mouse	Capture	
	FAB-K007-6C4	6C4	Mouse	Capture	
	FAB-K007-6G4	6G4	Mouse	Capture/ Detection	
	FAB-K007-15G4	15G4	Mouse	Detection	

Clinical Performance



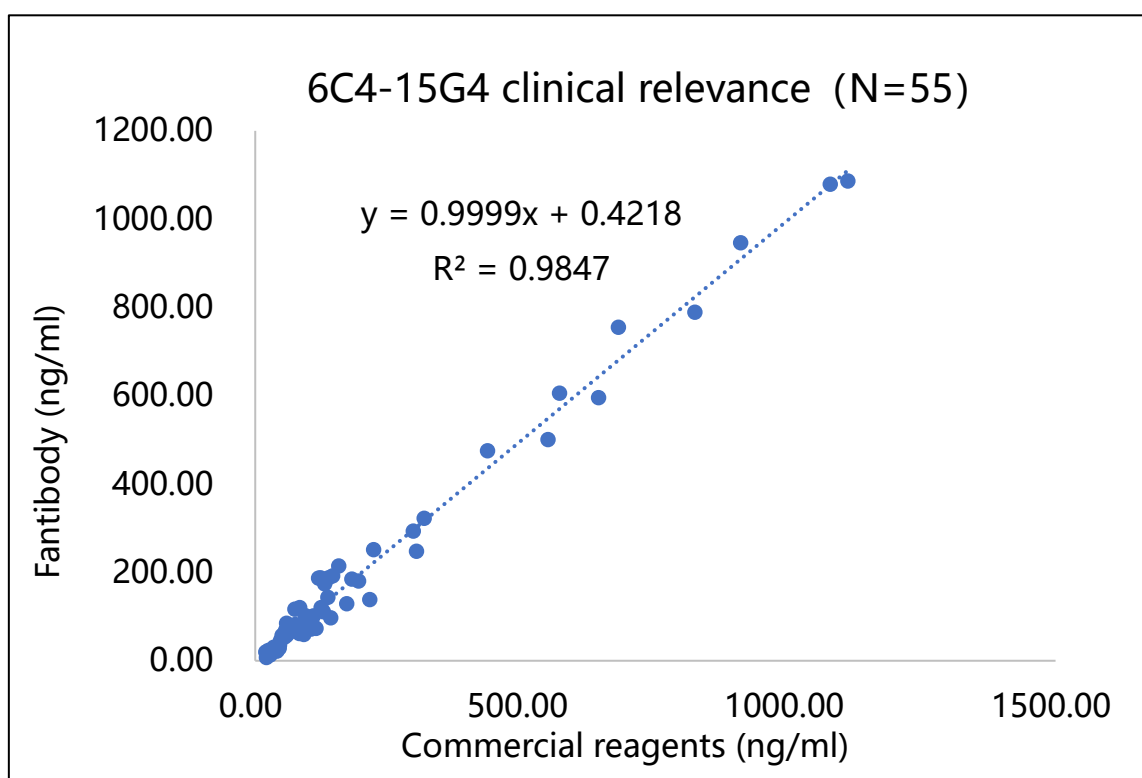
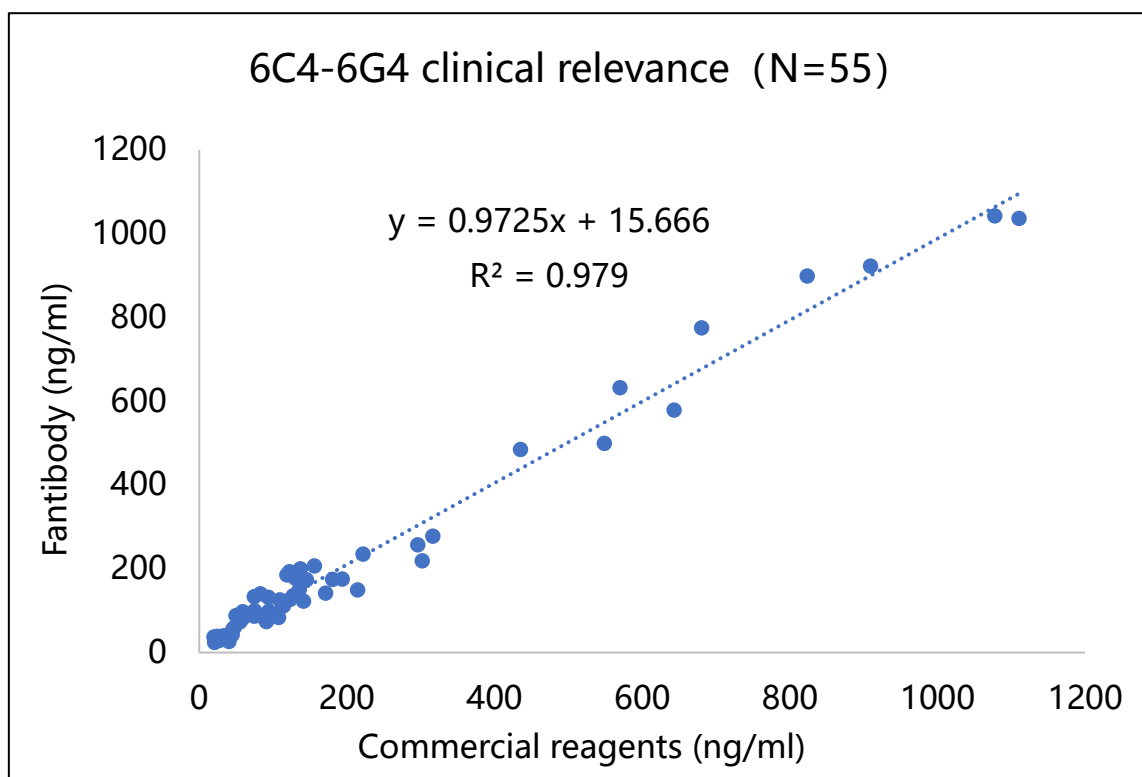
CLIA: Linear range: 0.16-220ng/ml,
sensitivity: 160pg/ml,
N=77, correlation: $R^2 > 0.96$

Clinical Performance



CLIA: sensitivity 160pg/ml ,
Linear range: 0.16-220ng/ml ,
N=77, correlation $R^2 > 0.96$

Clinical Performance



TIA: sensitivity: 5ng/ml,
linear range: 5-1000ng/ml,
N=55, correlation: $R^2 > 0.97$.

Contact us:
3rd F, MTP, Shuitu , Liangjiang New District,
Chongqing China 400714
Tel: +86-23-68616605
Email: info@fantibody.com
website: www.fantibody.com

Quotes:
sales@fantibody.com
Shipment status:
order@fantibody.com
Technical support:
support@fantibody.com

