

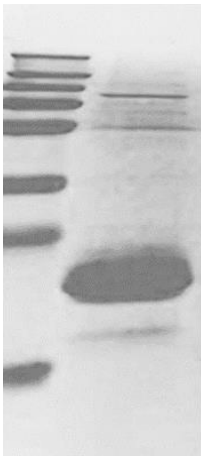
# Profile of IL-6

## Products

Product	CAT#	Purity	Source	Application
IL-6 Ag	FAP-BC001	>90%	293 cells	Calibrator/ Quality Control

Product	CAT#	Clone	Source	Capture/ Detection	Pair/ Application
IL-6 Ab	FAB-B003	2F7	Mouse	Capture	2F7-7E5 2F7-6E9
		7E5	Mouse	Detection	
		6E9	Mouse	Detection	

Marker IL-6 eukaryotic antigen



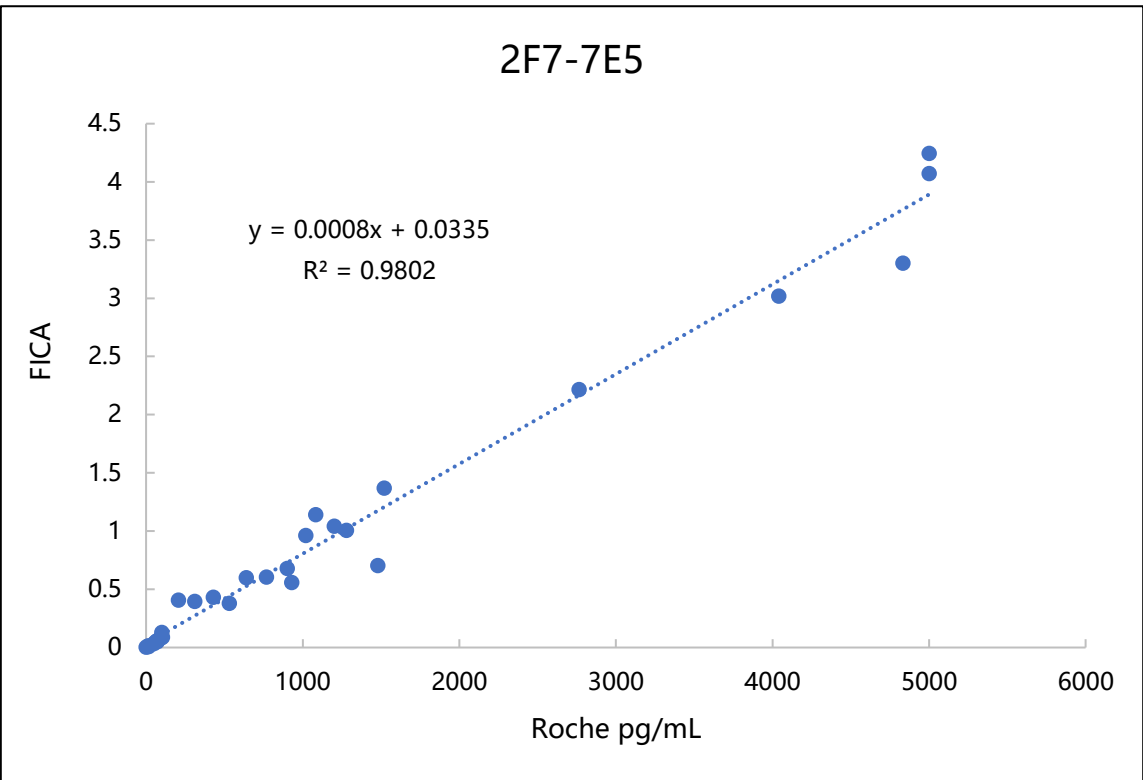
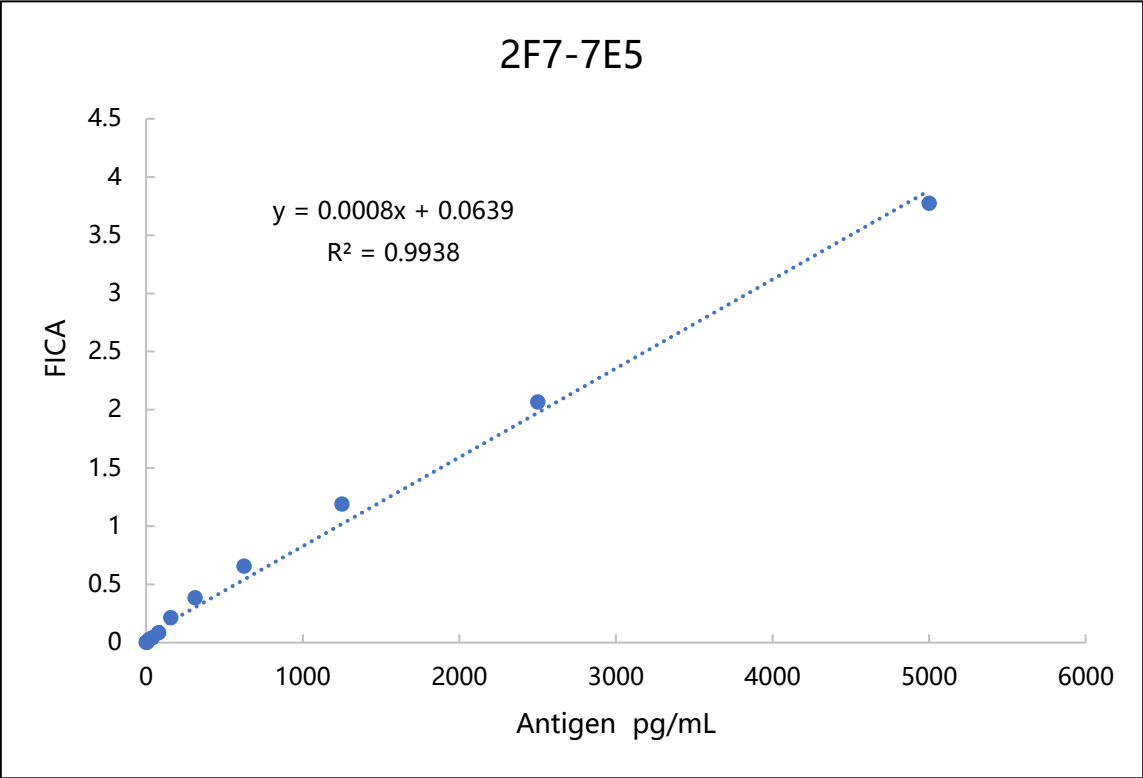
Marker IL-6 prokaryotic antigen



FICA, Fantibody IL-6 paired antibody sandwich assay

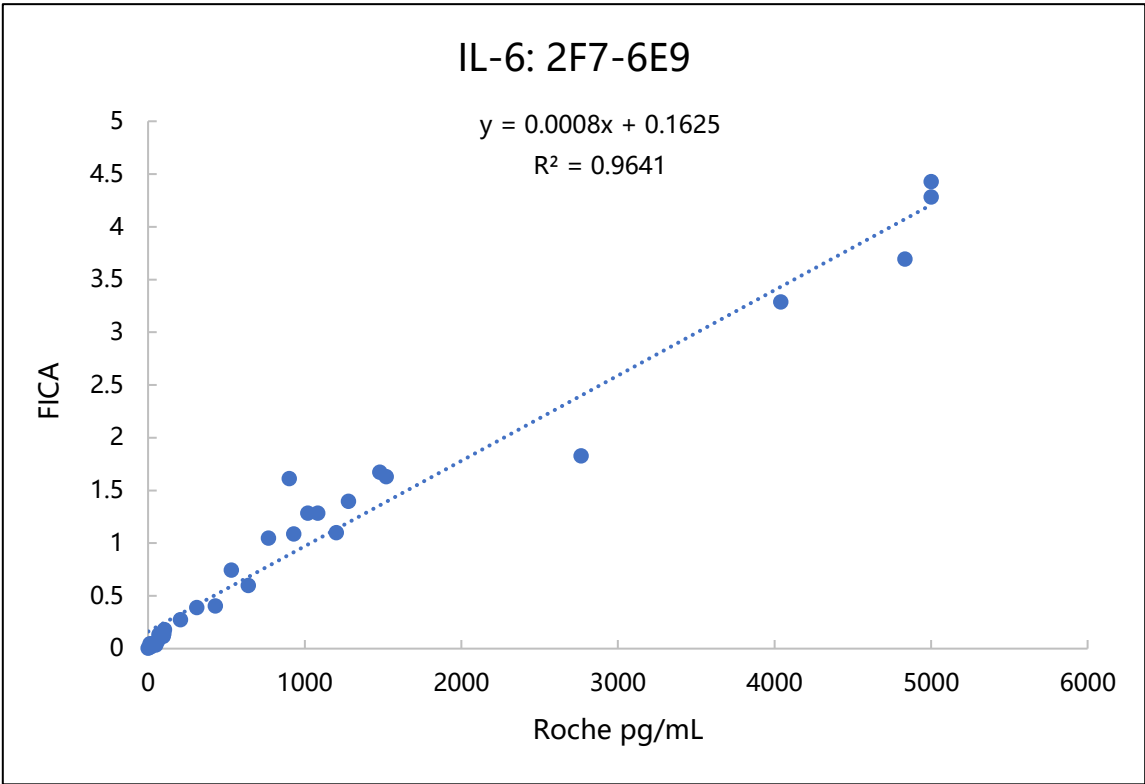
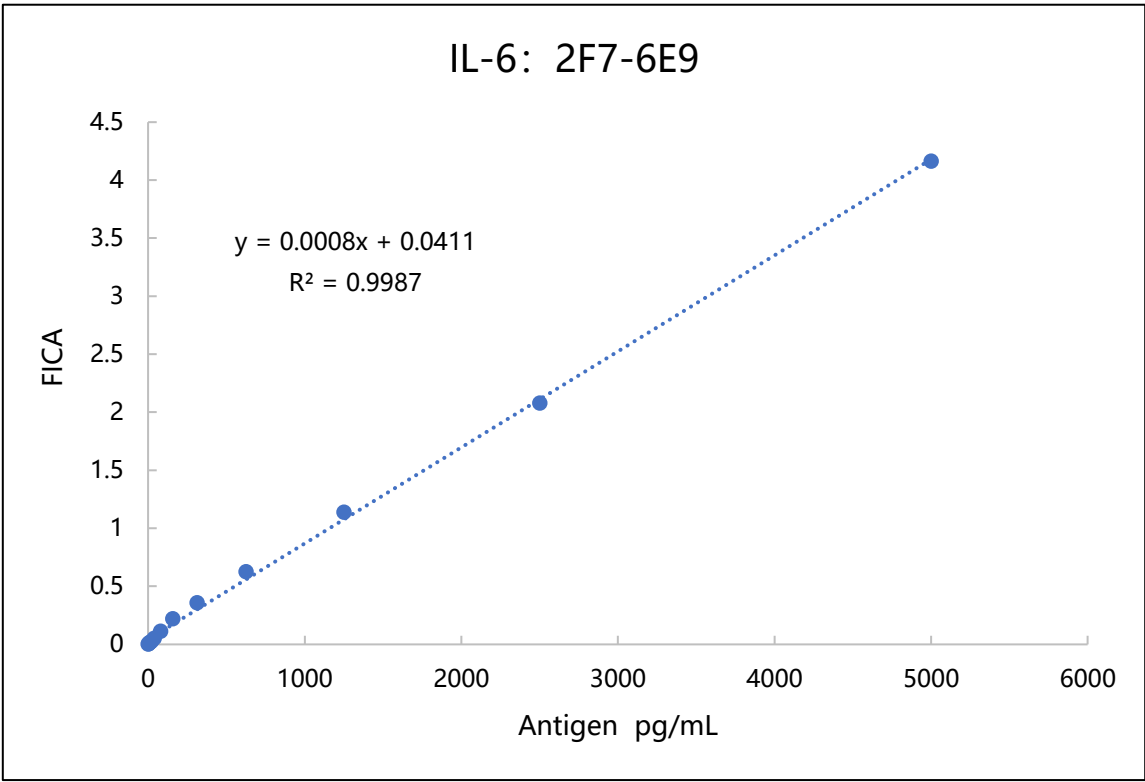
IL-6 eukaryotic antigen	T	C	T/C
1.9ng/ml	12287	52267	0.2351
19ng/ml	78062	40923	1.9075
190ng/ml	130800	15261	8.5709

# Clinical Performance



Sensitivity: 2pg/ml,  
linear range: 2-5000pg/ml  
Clinical relevance with Roche:  $R^2 > 0.98$

# Clinical Performance



Sensitivity: 2pg/ml,  
Linear range 2-5000pg/ml,  
Clinical relevance with Roche:  $R^2 > 0.96$

Contact us:  
3rd F, MTP, Shuitu , Liangjiang New District,  
Chongqing China 400714  
Tel: +86-23-68616605  
Email: info@fantibody.com  
website: www.fantibody.com

Quotes:  
sales@fantibody.com  
Shipment status:  
order@fantibody.com  
Technical support:  
support@fantibody.com

